

# CHEMISTRY | BIOCHEMISTRY | BIOLOGY

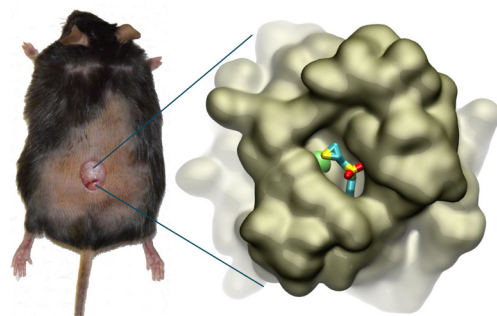
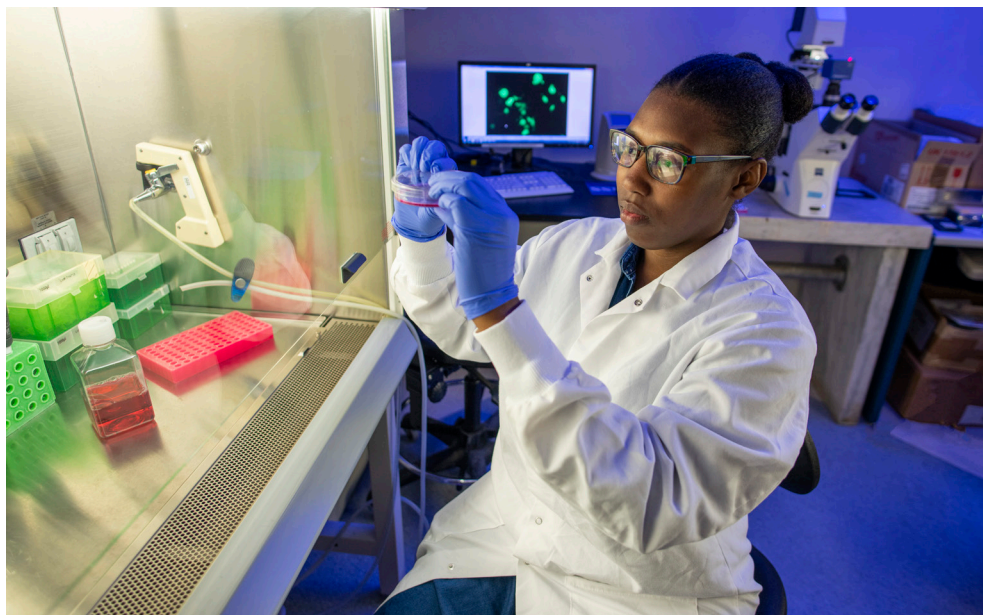
## Interface (CBBI) Program

### A UNIQUE EDUCATIONAL OPPORTUNITY

The CBBI Program at Notre Dame is an NIH-funded program that offers students the opportunity to train in an interdisciplinary environment that provides significant cross-training at the interface of chemistry and biology-related disciplines. CBBI students are offered special research training opportunities by participating in extended internships in industry, government laboratories, other laboratories at Notre Dame, or in other academic institutions. Training is supplemented with external seminar speakers, biweekly meetings in which students present and discuss their research, career path seminars, and an annual symposium.

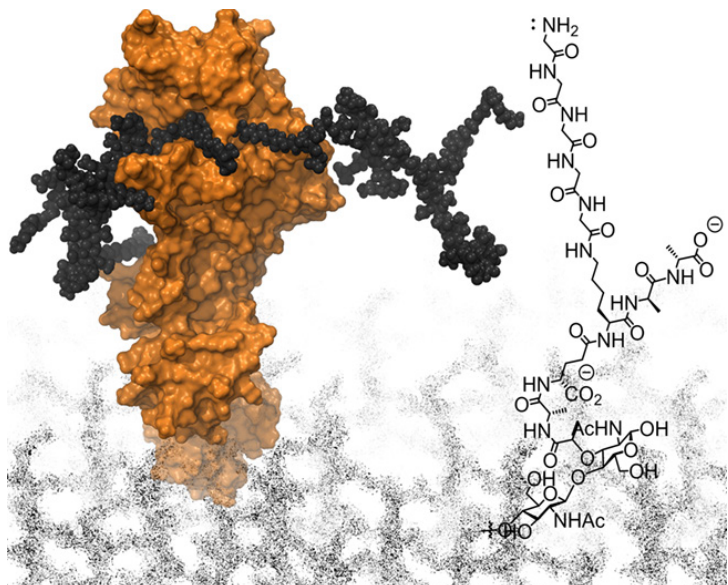
### PROFESSIONAL DEVELOPMENT AND CAREER PLACEMENT

The CBBI Program prepares students for scientific careers with writing and presentation skills courses, workshops on CV preparation, interview techniques, and best teaching practices, as well as career development seminars and on-site recruitment visits from companies. Our graduates hold leadership positions in academia and industry.

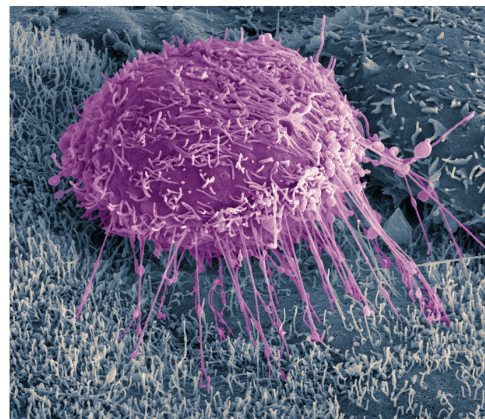


▲ MMP-9 is involved in the recalcitrance of diabetic wounds to healing; the small-molecule (R)-ND-336 inhibits MMP-9 and accelerates wound healing.





Early events ►  
in ovarian cancer  
metastasis.



◀ Investigating the mechanisms of resistance  
to  $\beta$ -lactam antibiotics by penicillin-binding  
protein 2a (PBP2a) of methicillin-resistant  
*Staphylococcus aureus*

## RESEARCH AREAS

Biochemistry  
Structural Biology  
Bioorganic Chemistry  
Biophysics  
Design and Synthesis of Novel Therapeutics  
Genetics and Genomics of Drug Resistance  
Molecular and Cell Biology  
Molecular Genetics and Macro biology  
Novel Antibiotic Strategies  
Pathobiology of Mycobacterial Diseases  
Proteomics  
Synthetic Organic Chemistry

## RESEARCH FACILITIES

Advanced Diagnostics and Therapeutics  
Biophysics Instrumentations Core Facility  
Center for Nano Science and Technology  
Center for Rare and Neglected Diseases  
Center for Research Computing  
Center for the Study of Biocomplexity  
Chemical Synthesis and Drug Discovery  
Computer Aided Molecular Design Facility  
Eck Institute for Global Health  
Flow Cytometry Facility  
Freimann Life Science Center  
Genomics and Bioinformatics Core Facility  
Harper Cancer Research Institute  
Notre Dame Integrated Imaging Facility  
Mass Spectrometry and Proteomics Facility  
Materials Characterization Facility  
Molecular Structure Facility  
Optics Facilities  
Warren Family Research Center for Drug  
Discovery and Development

## FINANCIALSUPPORT

Students accepted into the CBBi  
Program are provided full financial  
support that includes tuition,  
stipends, health insurance, and  
travel funds for professional  
training.

## CONTACT INFORMATION

### CHRISTIAN MELANDER

240 McCourtney Hall  
University of Notre Dame  
Phone: 574-631-9036  
Email: [cbbi@nd.edu](mailto:cbbi@nd.edu)

**CBBI.ND.EDU**



UNIVERSITY OF  
NOTRE DAME

SCIENCE